

Modular control plates MOD 10

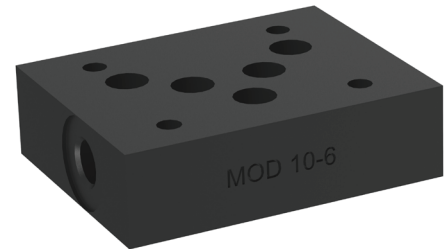
WN 10 | p_{max} 35 MPa | WK 560 521



DATA SHEET - OPERATION MANUAL

APPLICATION

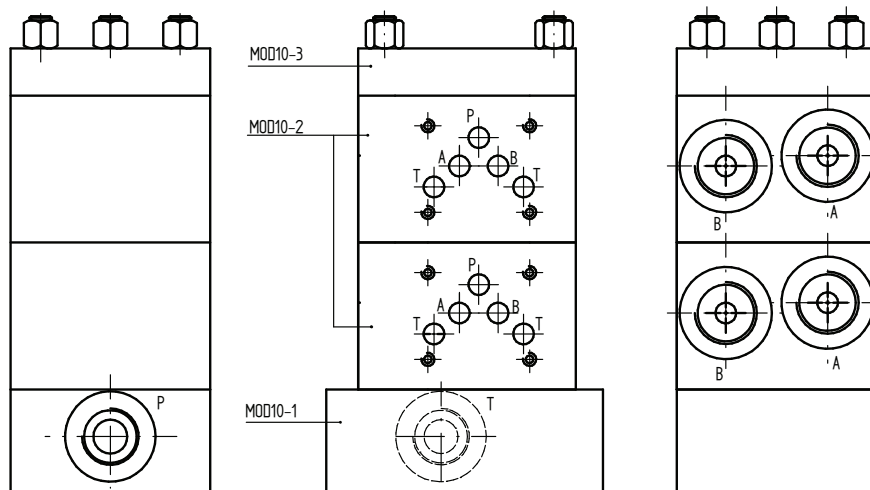
Modular control plates **MOD10** are used to construct hydraulic control system on the basis of hydraulic control equipment (directional control valves, valves etc.) with nominal size 10.



DESCRIPTION OF OPERATION

Basic elements of modular control plates are: lower plate **MOD10-1**, central plate **MOD10-2** and upper plate **MOD10-3**. The plate **MOD10-1** (or **MOD10-1A**) is the basic element to which oil from the pump **P** is supplied and is also the element of which return oil from the system **T** is carried out. The plate **MOD10-2** is the basic element for directional control valve and other control equipment (sandwich plate valves) to be connected.

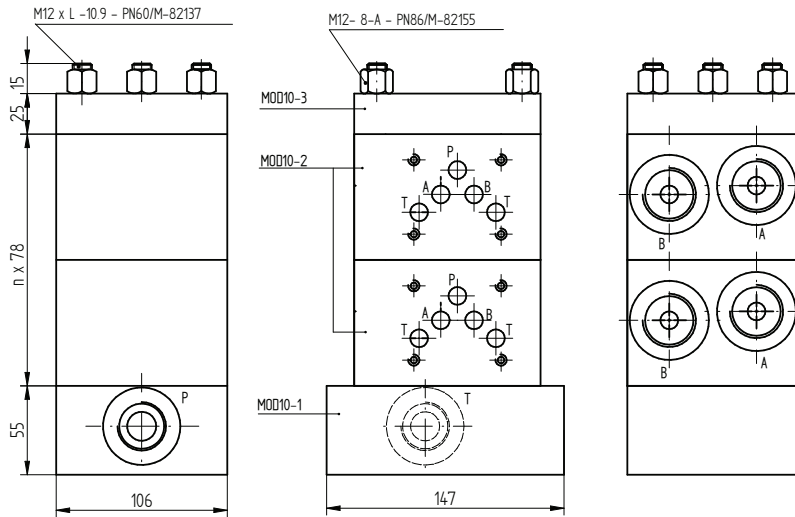
The extension of control system is possible when the number of modules is multiplied (maximum 6). The upper plate **MOD10-3** makes the control system closed and is also the base for mounting pressure gauge isolator valve **UOPF1**. The other plates of the system are supplementary elements when control system is extended.



Below hydraulic equipment manufactured by PONAR Wadowice that can be used for control systems to be mounted on the multi-station manifold block:

description	type	WK number			
directional spool valve, electrically operated	WE10	WK 427 700	pressure sequence valves, sandwich plate	UZKC10	WK 494 721
directional spool valve, hydraulically operated	WH10	WK 430 700	check valves, sandwich plate	WZZC10	WK 421 520
directional spool valve, hand lever operated	WMM10	WK 430 700	double check valves, pilot operated	ZZS10	WK 450 309
directional spool valve, rotary knob operated	WMD10	WK 430 700	throttle check valves	ZZFS10	WK 422 160
pressure reducing valves, sandwich plate	UZRC10	WK 494 720	pressure switches (with subplate UŁBC)	USPH4	WK 450 398
			pressure relief valves	UZPR10	WK 497 100

OVERALL AND CONNECTION DIMENSIONS



ports	P	T	A	B
	G1	G1	G ³ / ₄	G ³ / ₄

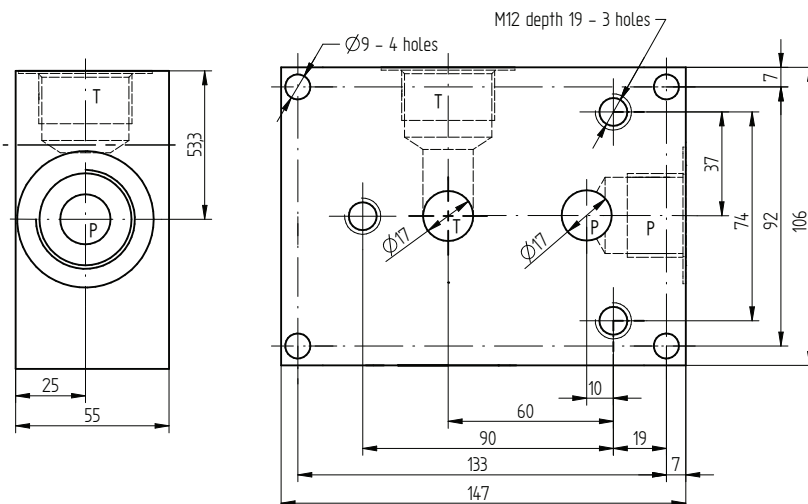
The plates are mounted using double-nutted screw **M12** and nuts. Basic data for the screws and nuts is given below.

screw acc. to PN60/M-82137	nut acc. to PN86/M-82155	pcs	number of modules
M12 x 136 - 10.9	M12 - 8-A	3	MOD10-1 + MOD10-2 + MOD10-3
M12 x 214 - 10.9	M12 - 8-A	3	MOD10-1 + 2MOD10-2 + MOD10-3
M12 x 292 - 10.9	M12 - 8-A	3	MOD10-1 + 3MOD10-2 + MOD10-3
M12 x 370 - 10.9	M12 - 8-A	3	MOD10-1 + 4MOD10-2 + MOD10-3
M12 x 448 - 10.9	M12 - 8-A	3	MOD10-1 + 5MOD10-2 + MOD10-3
M12 x 526 - 10.9	M12 - 8-A	3	MOD10-1 + 6MOD10-2 + MOD10-3

NOTE: Connecting screws and nuts are not included with the plates and must be ordered separately. Each plate is supplied with the sealing rings (dimensions are given with the plates description)

OVERALL AND CONNECTION DIMENSIONS

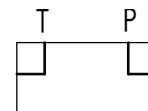
version **MOD10-1**



ports	P	T
	G1	G1

material for plate 45

HYDRAULIC DIAGRAMS

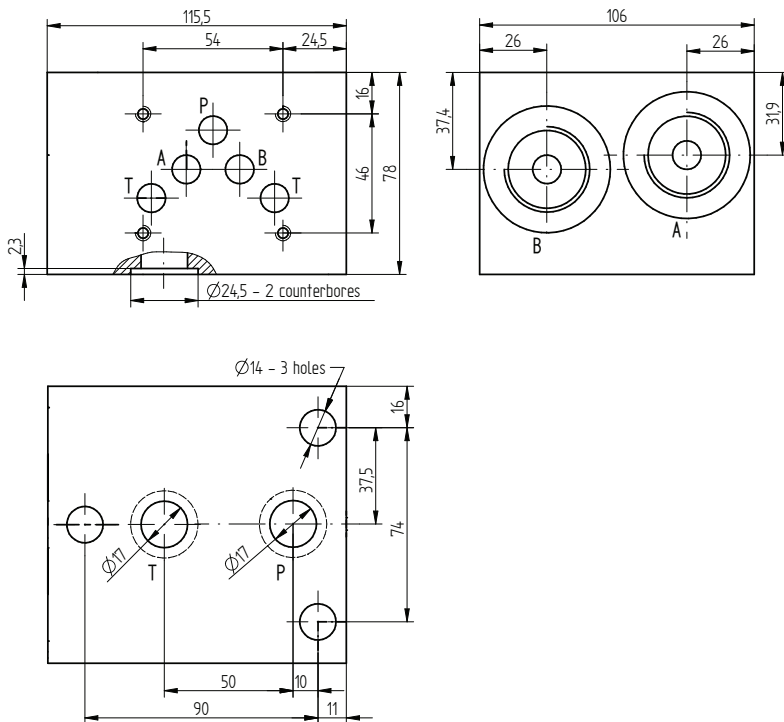


HOW TO ORDER

Modular control plates must be ordered by:
MOD10-1

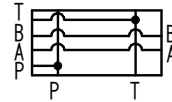
OVERALL AND CONNECTION DIMENSIONS

version **MOD10-2**



ports	A	B
	G $\frac{3}{4}$	G $\frac{3}{4}$
material for plate	45	
o-ring	19,2 x 3 - 2 pcs	

HYDRAULIC DIAGRAMS

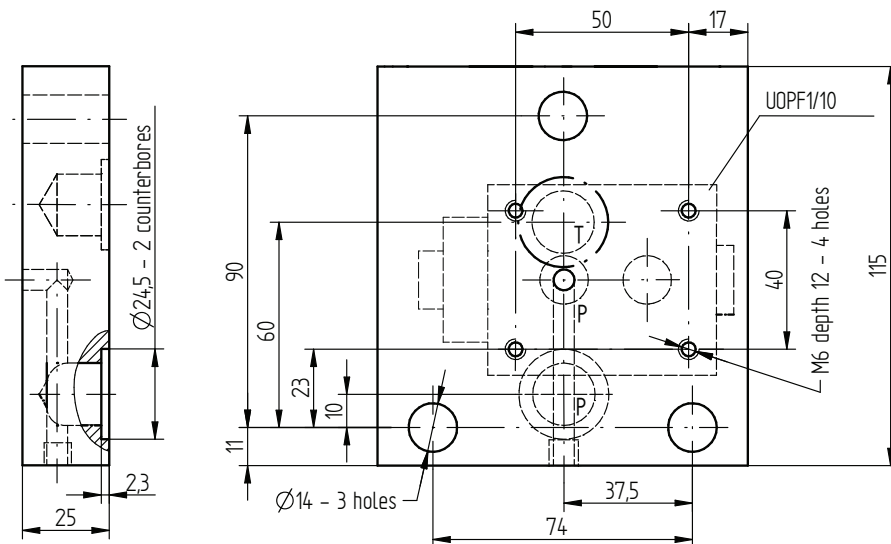


HOW TO ORDER

Modular control plates must be ordered by:
MOD10-2

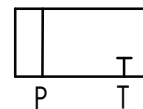
OVERALL AND CONNECTION DIMENSIONS

version **MOD10-3**



material for plate	45
o-ring	19,2 x 3 - 2 pcs

HYDRAULIC DIAGRAMS

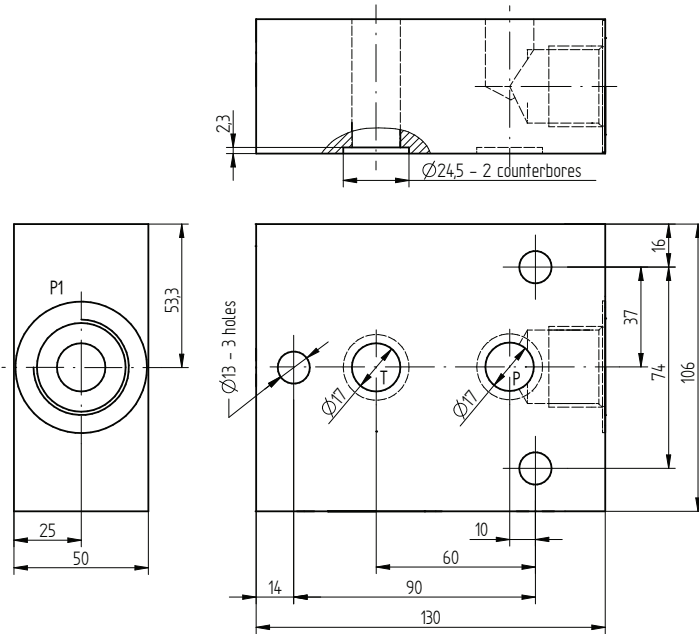


HOW TO ORDER

Modular control plates must be ordered by:
MOD10-3

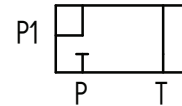
OVERALL AND CONNECTION DIMENSIONS

version **MOD10-4**



ports	P1
	G1
material for plate	45
o-ring	19,2 x 3 - 2 pcs

HYDRAULIC DIAGRAMS

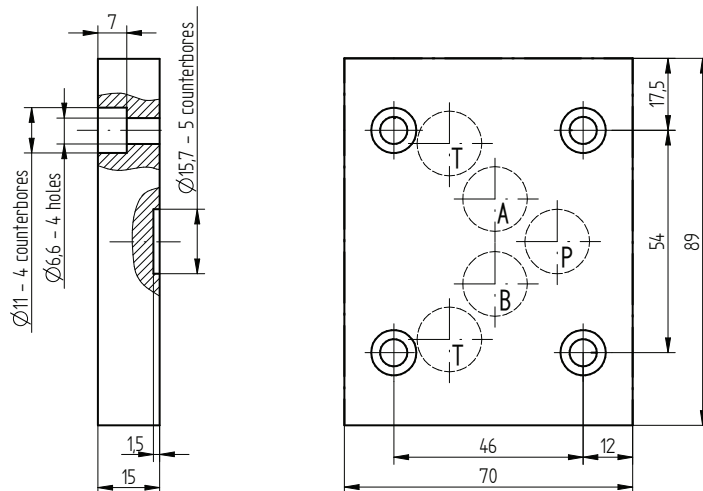


HOW TO ORDER

Modular control plates must be ordered by:
MOD10-4

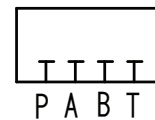
OVERALL AND CONNECTION DIMENSIONS

version **MOD10-5**



material for plate	45
o-ring	12 x 2 - 5 pcs

HYDRAULIC DIAGRAMS

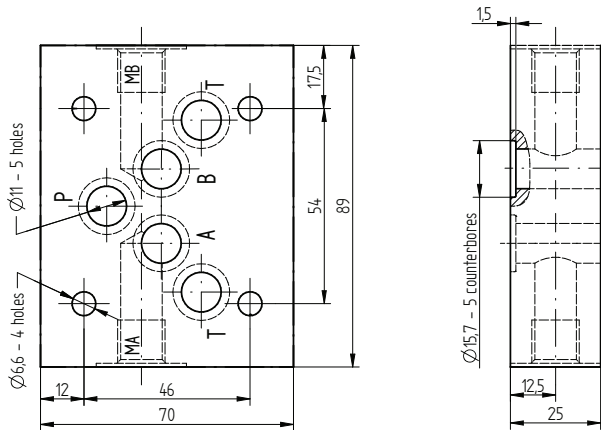


HOW TO ORDER

Modular control plates must be ordered by:
MOD10-5

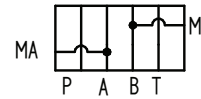
OVERALL AND CONNECTION DIMENSIONS

version **MOD10-6**



ports	MA	MB
	G $\frac{1}{4}$	G $\frac{1}{4}$
material for plate	45	
o-ring	12 x 2 - 5 pcs	

HYDRAULIC DIAGRAMS

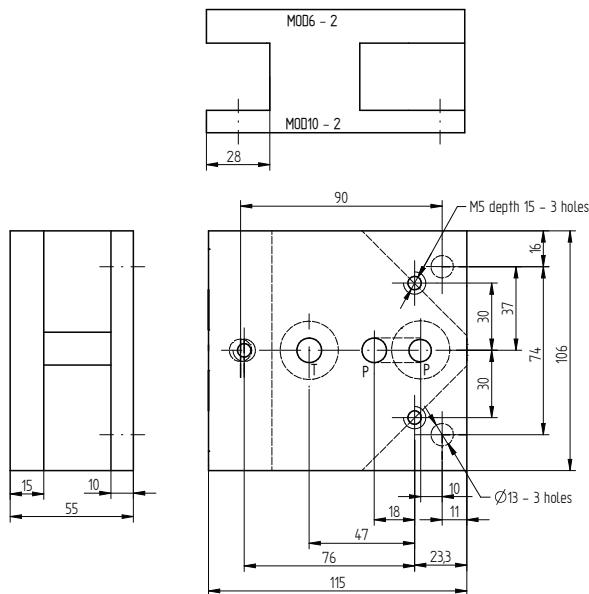


HOW TO ORDER

Modular control plates must be ordered by:
MOD10-6

OVERALL AND CONNECTION DIMENSIONS

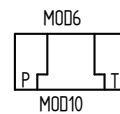
version **MOD10-7**



material for plate	45
o-ring	19,2 x 3 - 2 pcs

NOTE: Plate reducing **MOD10** system into **MOD6** system.

HYDRAULIC DIAGRAMS

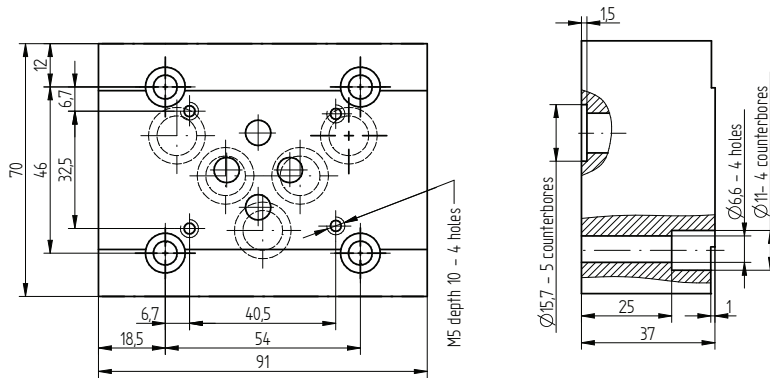


HOW TO ORDER

Modular control plates must be ordered by:
MOD10-7

OVERALL AND CONNECTION DIMENSIONS

version **MOD10-8**

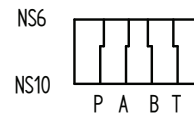


material for plate	45
o-ring	12 x 2 - 5 pcs

NOTE: Plate reducing the connection NS 10 into the connection NS 6.

Mounting screws for mounting the subplates M6 x 35 - 10.9 acc. to PN-87/M-82302 - 4 pcs, delivered on separate order.

HYDRAULIC DIAGRAMS



HOW TO ORDER

Modular control plates must be ordered by: **MOD10-8**

OVERALL AND CONNECTION DIMENSIONS

version **MOD10-9, MOD10-10, MOD10-11**

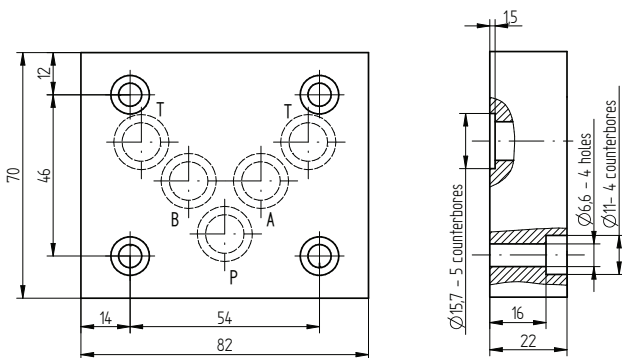


plate	MOD10-9	MOD10-10	MOD10-11
material for plate	45		
o-ring	12 x 2 - 5 pcs		

HYDRAULIC DIAGRAMS



plate MOD10 - 9

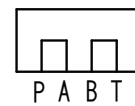


plate MOD10 - 10



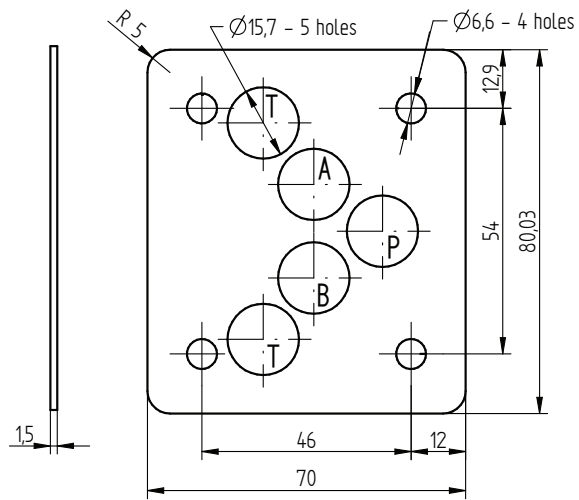
plate MOD10 - 11

HOW TO ORDER

Modular control plates must be ordered by: **MOD10-9**

OVERALL AND CONNECTION DIMENSIONS

version **MOD10-12**



material for plate	45
o-ring	12 x 2 - 5 pcs

NOTE: Subplate MOD10 -12 with the sealing rings (5 pcs) allows to seal two flat connections NS10

HYDRAULIC DIAGRAMS



HOW TO ORDER

Modular control plates must be ordered by:
MOD10-12

KONTAKT

PONAR Wadowice S.A.
ul. Wojska Polskiego 29
34-100 Wadowice

tel. +48 33 488 21 00
www.ponar-wadowice.pl