

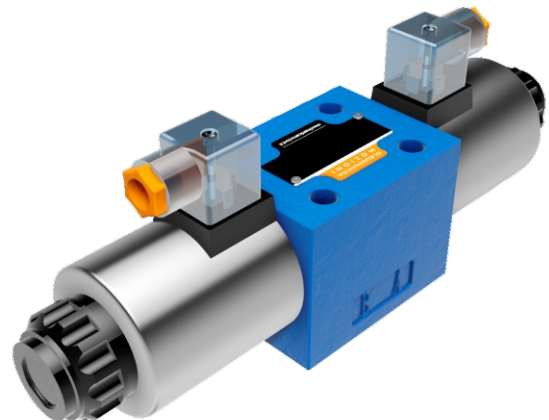


**DISTRIBUTORI
OLEODINAMICI**

WE10

**SOLENOID OPERATED
DIRECTIONAL CONTROL VALVES**

WE10 SERIES DIRECTIONAL CONTROL VALVES ARE SOLENOID OPERATED DIRECTIONAL SPOOL VALVES. THESE VALVES ARE USED TO THE START, STOP AND DIRECTION OF FLOW.

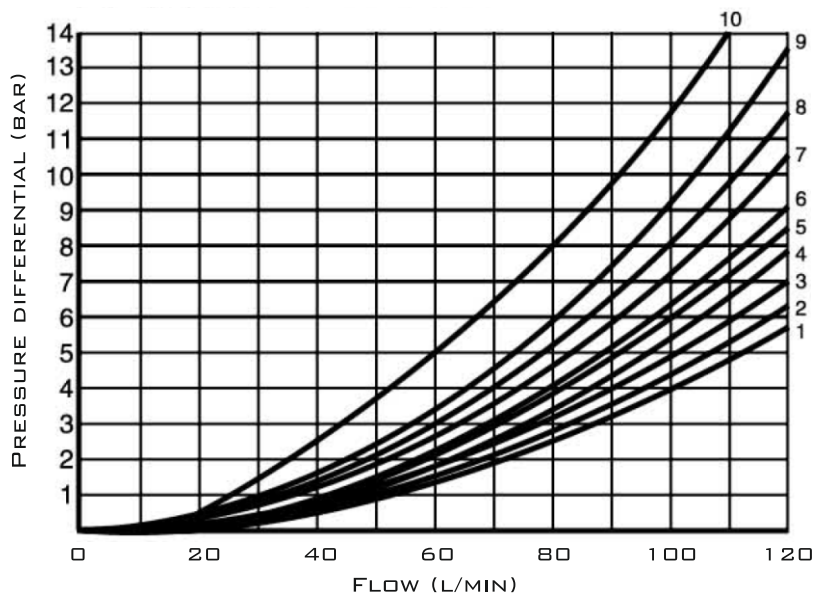


TECHNICAL DATA

SIZE		10
MAX. FLOW RATE (L/MIN)		120
OPERATING PRESSURE (MPA)	A, B, P PORTS	31.5
	T PORT	16
WEIGHT (KG) WITHOUT/WITH HANDLE	1 SOLENOID	4.6
	2 SOLENOIDS	6.4
VALVE BODY (MATERIAL)		CASTING PHOSPHATING SURFACE

CHARACTERISTIC CURVES

$\Delta P-Q$ CHARACTERISTIC CURVES



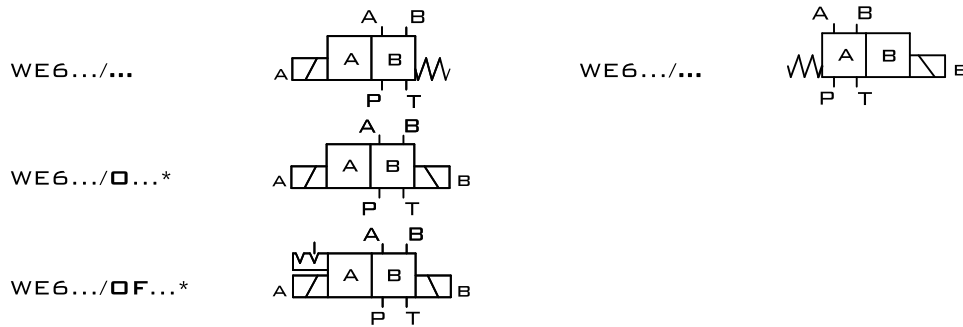
SPOOL SYMBOL	FLOW DIRECTION			
	P - A	P - B	A - T	B - T
A; B	3	3	-	-
C	3	3	4	5
D; Y	5	5	6	6
E	1	1	4	4
F	2	3	7	4
G	3	3	6	7
H	1	1	6	7
J	1	1	3	3
L	2	2	3	5
M	1	1	4	5
P	4	2	5	7
Q	1	2	1	3
R	3	6	4	-
T	3	3	6	7
U, V	2	2	3	3
W	2	2	4	5

9 CURVE - SPOOL SYMBOL "R" IN SHIFTED POSITION B → A;
 3 CURVE - SPOOL SYMBOL "H" IN CENTRAL POSITION P → T;
 4 CURVE - SPOOL SYMBOL "F" IN CENTRAL POSITION P → A;
 9 CURVE - SPOOL SYMBOL "F" IN CENTRAL POSITION A → T,
 SPOOL SYMBOL "F", "G" AND "T" IN CENTRAL POSITION P → T;

5, 8, 10 CURVES - SPOOL SYMBOL "P" IN CENTRAL POSITION P → B, B → T AND P → T.

SCHEMES

SCHEMES OF 2-POSITION DIRECTIONAL SPOOL VALVES VERSIONS WITH POSITIONS A, B



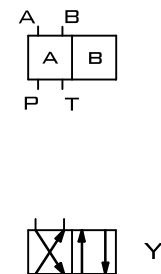
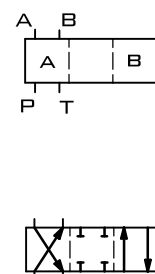
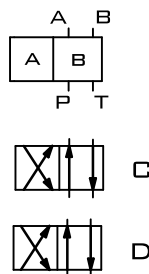
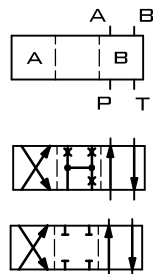
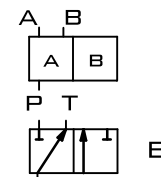
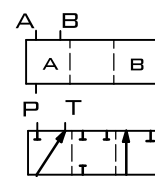
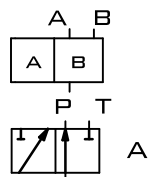
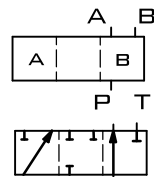
* - VERSIONS AVAILABLE ONLY FOR SPOOL SCHEMES: A, C, D

WORKING AND
INDIRECT POSITIONS

WORKING
POSITIONS

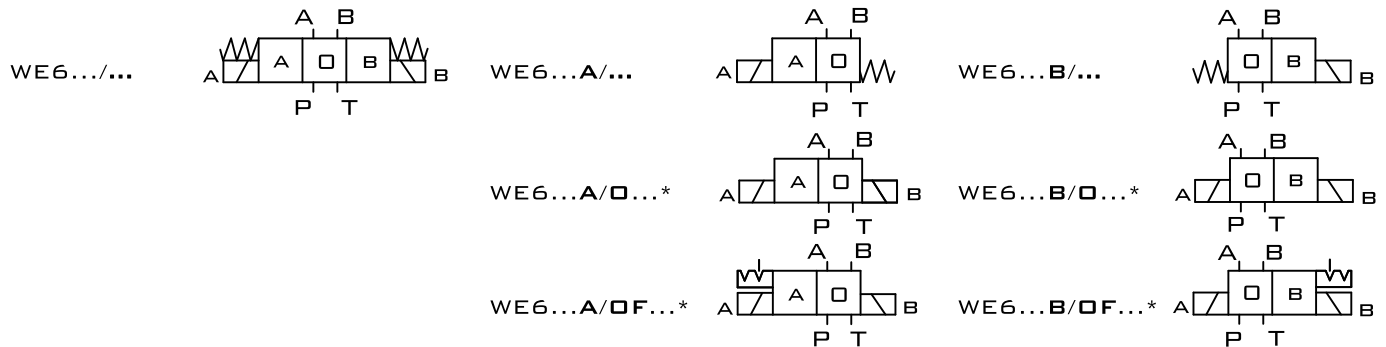
WORKING AND
INDIRECT POSITIONS

WORKING
POSITIONS



SCHEMES OF 3-POSITION DIRECTIONAL SPOOL VALVES

SCHEMES OF 2-POSITION DIRECTIONAL SPOOL VALVES VERSIONS WITH POSITIONS A, O VERSIONS WITH POSITIONS O, B



* - VERSIONS AVAILABLE ONLY FOR SPOOL SCHEMES: E, G, H, J, E, G, H, J

SEE ALSO:
WE6, WEH

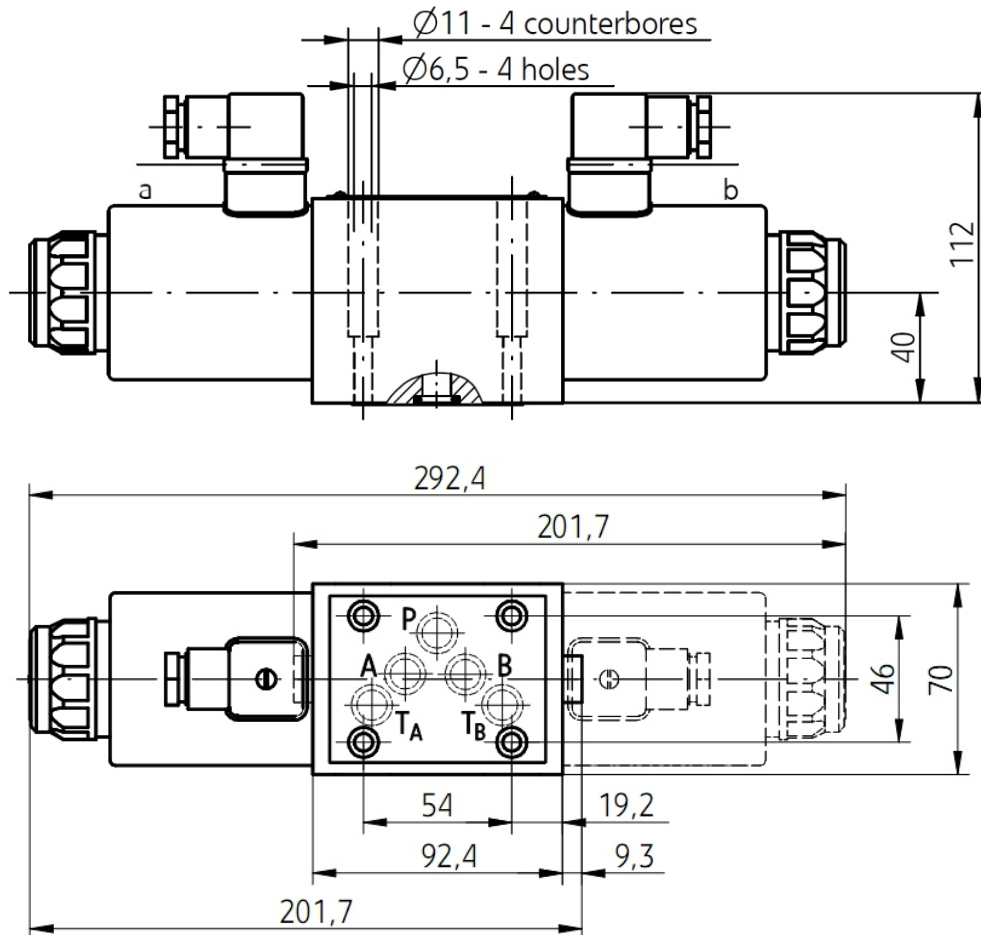
SCHEMES

HYDRAULIC SCHEMES OF SPOOLS

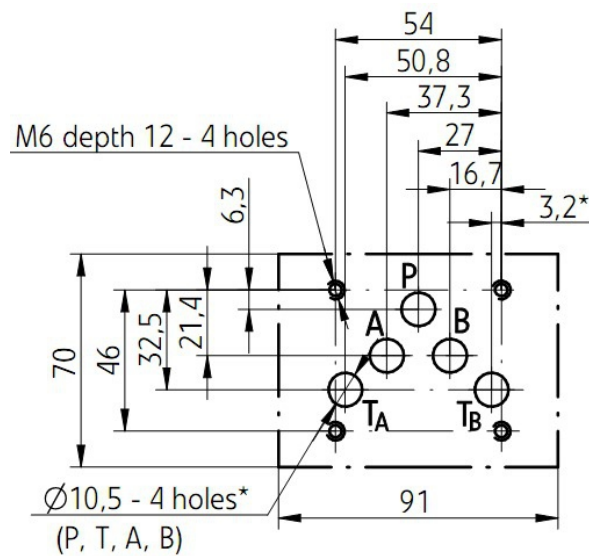
WORKING AND INDIRECT POSITIONS	WORKING POSITIONS	WORKING AND INDIRECT POSITIONS	WORKING POSITIONS	WORKING AND INDIRECT POSITIONS	WORKING POSITIONS

* - FLOW SECTION IN INITIAL POSITION

SUBPLATE INSTALLATION DIMENSIONS



* - CONNECTION WITH 1 HOLE T FROM PORT SIDE A OR B IS SUFFICIENT - HOLES T_A AND T_B ARE CONNECTED TO THE PORT T IN THE HOUSING OF DIRECTIONAL SPOOL VALVE



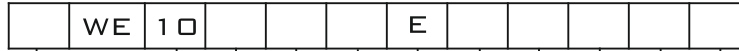


**DISTRIBUTORI
OLEODINAMICI**

WE10

SOLENOID OPERATED
DIRECTIONAL CONTROL VALVES

ORDER CODE



3=3-WAY
4=4-WAY

10=10 SIZE

SPOOL TYPE

3X=30-39 SERIES

NO CODE=WITH SPRING RETURN
 □=WITHOUT SPRING RETURN
 □F=WITHOUT SPRING RETURN
 WITH DETENT

E=STANDARD SOLENOID

NO CODE=NBR SEALS
 V=FKM SEALS

Z5L=SQUIRE PLUGS WITH LAMP

NO CODE=WITHOUT THROTTLE INSERT
 B0.8=THROTTLE 0.8 MM
 B1.0=THROTTLE 1.0 MM
 B1.2=THROTTLE 1.2 MM

N9=WITH CONCEALED HAND EMERGENCY

G12=DC12V
 G24=DC24V
 W110R=AC110V
 W220R=AC220V