

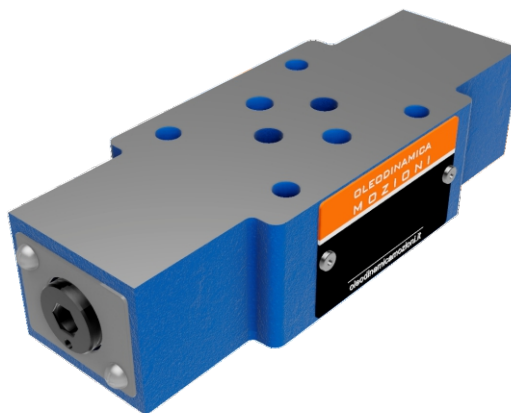


VALVOLE DI FLUSSO

Z2FS6

MODULAR THROTTLE/CHECK VALVES

Z2FS6 SERIES THROTTLE/CHECK VALVES ARE USED TO RESTRICT FLOW IN ONE DIRECTION WHILE ALLOWING FREE-FLOW, AND IN THE OPPOSITE DIRECTION AS CHECK VALVES.

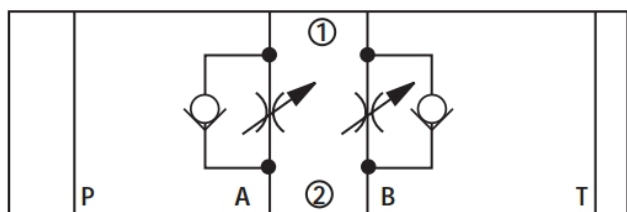


TECHNICAL DATA

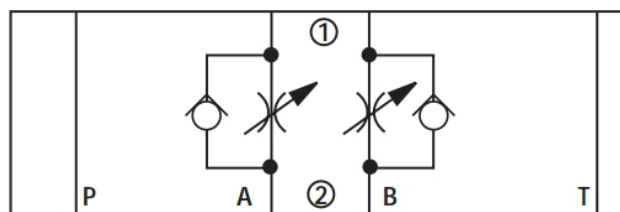
|                          |                             |
|--------------------------|-----------------------------|
| SIZE                     | 6                           |
| OPERATING PRESSURE (MPA) | 31.5                        |
| MAX. FLOW RATE (L/MIN)   | 80                          |
| FLUID TEMPERATURE (°C)   | -30 - 80                    |
| WEIGHT (KG)              | 1                           |
| VALVE BODY (MATERIAL)    | CASTING PHOSPHATING SURFACE |

SCHEMES

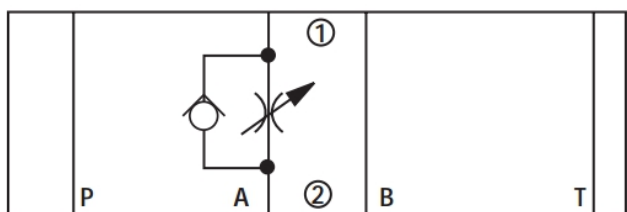
1 = COMPONENT SIDE, 2 = PLATE SIDE



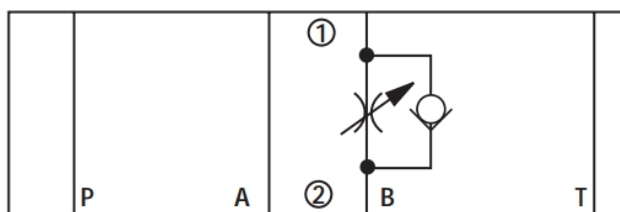
Z2FS6



Z2FS6



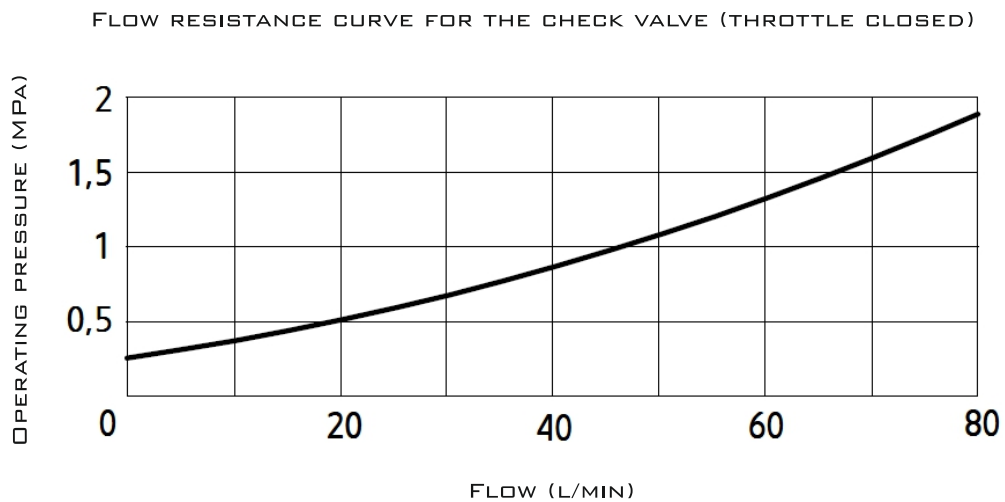
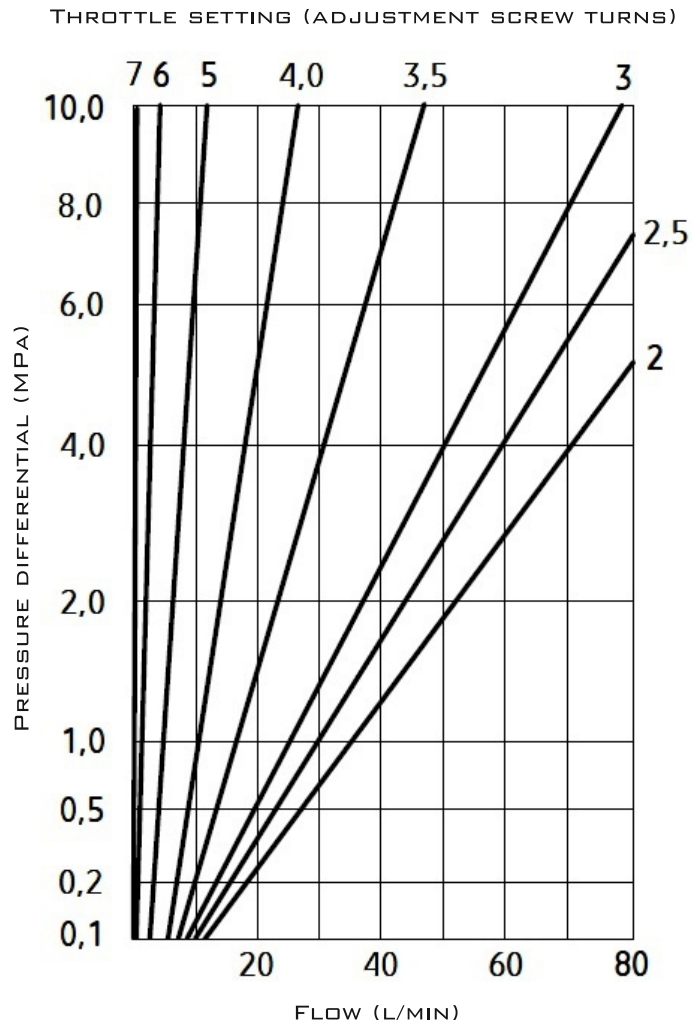
Z2FS6 A



Z2FS6 B



## CHARACTERISTIC CURVES



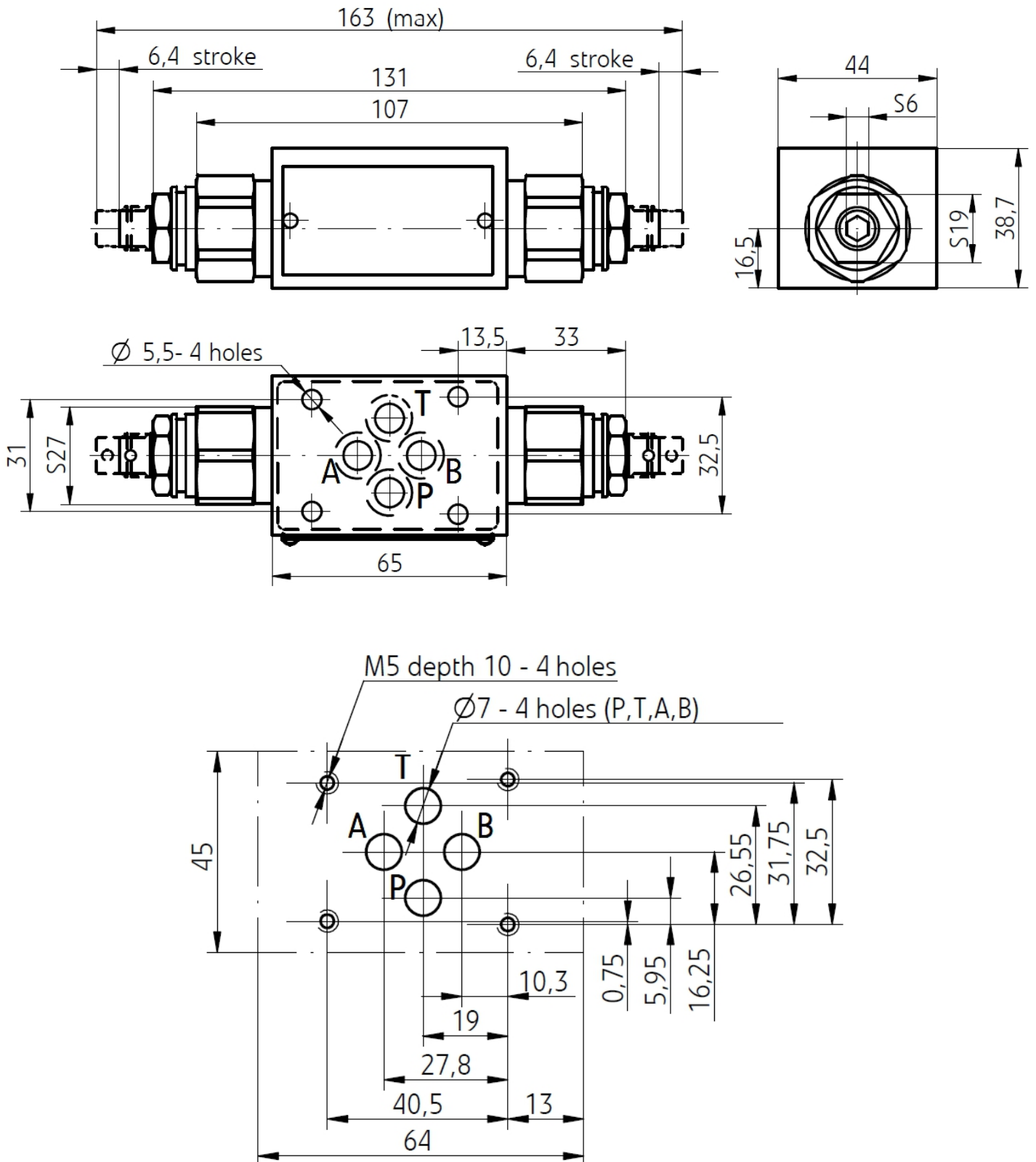


VALVOLE DI FLUSSO

Z2FS6

MODULAR THROTTLE/CHECK VALVES

SUBPLATE INSTALLATION DIMENSIONS



**Z2FS6**

VALVOLE DI FLUSSO



MODULAR THROTTLE/CHECK VALVES

**ORDER CODE**

|      |   |  |  |  |  |
|------|---|--|--|--|--|
| Z2FS | 6 |  |  |  |  |
|------|---|--|--|--|--|

6=6 SIZE

NO CODE=PORT A, B WITH THROTTLE  
A=PORT A WITH THROTTLE  
B=PORT B WITH THROTTLE

3X=30-39 SERIES  
4X=40-49 SERIES

ADDITIONAL REMARKS

NO CODE=NBR SEALS  
V=FKM SEALS